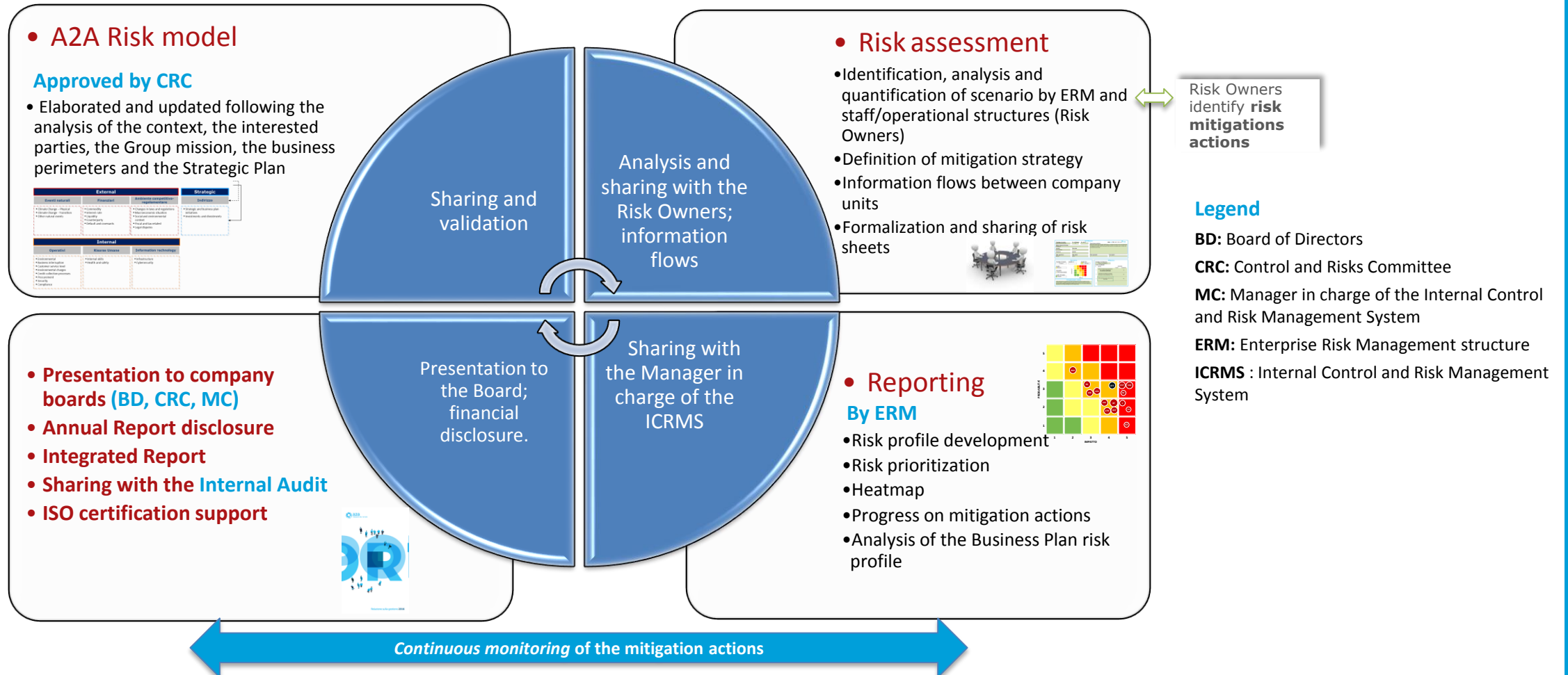


ENTERPRISE RISK MANAGEMENT AT A2A

Process



The process is supported by an adequate reference **methodology** for the identification of main risk features to allow for the measurement and prioritization. This methodology is coupled with an aggregate map of the risk scenario (Heatmap), as well as other proper tools. The whole activity is regulated by a specific company procedure («**ERM Policy**»).